

ADB		Room Data Sheet		T0504-PCCI	
<b>Project:</b>	PCCI-ALL	PCCI Exemplar Rooms			
<b>Department:</b>	PCCI	All PCCI Exemplar Rooms			
<b>Room:</b>	T0504-PCCI	Clean Supplies			
<b>Room Number:</b>		<b>Revision Date:</b>		21/01/2008	
<b>Activities:</b>	1) For room / space activities, see notes section				
<b>Personnel:</b>	2 x Persons				
<b>Planning Relationships:</b>	Close to clinical areas.				
<b>Space Data:</b>	<b>Area (m²):</b>	15.00	<b>Height (mm):</b>	2,700	
	Room area: For critical dimensions see drawing T0504-PCCI page 1. Room height is a minimum.				
<b>Notes:</b>	<p><b>Activities:</b></p> <ul style="list-style-type: none"> <li>- Electronic Materials Management, complying with HTM71</li> <li>- Holding supply of sterile equipment and supplies.</li> <li>- Ordering, receiving checking and safekeeping: lotions, fluids, drugs, supplies. using scanner on supplies.</li> <li>- Storing non-controlled medicines and pharmaceuticals.</li> <li>- Refrigerated storage.</li> <li>- Parking dressing trolley.</li> </ul> <p><b>Notes:</b></p> <ul style="list-style-type: none"> <li>- Room for storage only, no preparation to be carried out.</li> <li>- Quantity of storage will depend on size of unit being served and frequency of supplies delivery.</li> <li>- Size of supplies cage and access requirements should be considered against clear door opening for each project.</li> </ul> <p><b>Revisions:</b></p> <p>30-05-07, Final issue  01-09-07, Issued for M&amp;E Review  07-11-07, Issue for HE Discussion  21-01-08, Exemplar Issue</p>				

<b>ADB</b>	<b>Room Environmental Data</b>	<b>T0504-PCCI</b>
------------	--------------------------------	-------------------

<b>Project:</b>	PCCI-ALL	PCCI Exemplar Rooms
<b>Department:</b>	PCCI	All PCCI Exemplar Rooms
<b>Room:</b>	T0504-PCCI	Clean Supplies
<b>Room Number:</b>	<b>Revision Date:</b> 21/01/2008	

<b>AIR</b>	<b>Requirements</b>	<b>Notes</b>
<b>Winter Temperature (DegC):</b>	20	Summer temperature to be controlled to suit storage of drugs
<b>Summer Temperature (DegC):</b>	26	
<b>Mechanical Ventilation (Supply ac/hr):</b>	6.0	Supply ventilation cascade to corridor
<b>Mechanical Ventilation (Extract ac/hr):</b>		
<b>Pressure Relative to Adjoining Space:</b>	POS	
<b>Filtration (%DSE and % Arrestance):</b>	/	
<b>Humidity (%RH):</b>		
<b>General Notes:</b>		
<b>LIGHTING</b>		
<b>Service Illumination (Lux):</b>	300	Working plane. Maximise daylight
<b>Service Illumination Night (Lux):</b>		
<b>Local Illumination (Lux):</b>		
<b>Colour Rendering Required:</b>	Y	Lighting of the level and quality one third to one half that provided by normal lighting. Grade A is a project option.
<b>Standby Lighting Grade:</b>	B	
<b>General Notes:</b>		Maximise daylight; window design to achieve an average daylight factor of 4 percent. Intelligent lighting control system enabling daylight dimming and maintained illumination levels. PIR sensing control with manual override. Indirect/direct lighting to be adopted.
<b>NOISE</b>		
<b>Privacy Factor Required (dB):</b>		Design to be flexible for conversion to consulting/admin space. Ref HTM08-01 Privacy Factor: Table 3 &4 Mechanical Services: Table 2 Intrusive noise: Table 1 Derogation applicable where natural ventilation is incorporated, site assessment of background noise levels required.
<b>Mechanical Services (NR):</b>		
<b>Intrusive Noise (NR Leq):</b>		
<b>*Acceptable Sound Level [L10dB(A)]:</b>		
<b>*Speech Privacy Required:</b>	N	
<b>*Quality Which Cannot Be Tolerated:</b>		
<b>(* alternative format)</b>		
<b>General Notes:</b>		
<b>SAFETY</b>		
<b>Hot Surface Max. Temp (DegC):</b>	82	Ceiling radiant heating panels.
<b>Hot Water Max. Temp (DegC):</b>	41	

**General Notes:**

**FIRE**

**Enclosure:**

**Automatic Detection:**

Smoke

ADB	Room Design Character	T0504-PCCI
<b>Project:</b> PCCI-ALL PCCI Exemplar Rooms <b>Department:</b> PCCI All PCCI Exemplar Rooms <b>Room:</b> T0504-PCCI Clean Supplies <b>Room Number:</b> <span style="float: right;"><b>Revision Date:</b> 21/01/2008</span>		
<b>Walls:</b>	See separate matrix for discussion. Surface Finish (HTM 56): 3 i.e. Impervious, jointless, smooth - reflectance value $\geq 70\%$	
<b>Floor:</b>	See separate matrix for discussion. Surface Finish (HTM 61): 4: Hard, impervious, jointless, extra slip resistance - reflectance value $\geq 50\%$	
<b>Ceiling:</b>	See separate matrix for discussion. Surface Finish (HTM 60): 3:Smooth, imperforate - reflectance value $\geq 80\%$	
<b>Doorsets:</b>	(See also HTM 58) Size (Single, Leaf & Half, Double. [mm] ): 1x 1000mm, single leaf Access Requirements: Ambulant and wheelchair access. Vision Panel (clear/obscured, privacy control, high/low level): None. Finish (wipe down / standard): Standard. Lockable Requirements (Not, Standard, Keypad, Proximity Sensor): Electronic Access Lockable. Special Requirements (Radiation Protection etc.): None. Special Signage: None.	
<b>Windows:</b>	(HTM 55) Clear high performance solar control glass. Solar & privacy control	
<b>Internal Glazing:</b>	(HTM 57) N/A	
<b>Hatch:</b>	N/A	
<b>Notes:</b>	Ceilings to be avoided in naturally ventilated rooms to enable passive cooling via exposed slab.  Facility to retrofit 100mm window restrictions in the future to apply to openings below 1800mm AFFL.. Is this a staff only area???  Expected window opening areas between 7 and 10 percent of floor area to enable effective natural ventilation, split equally between high and low level opening.  Window opening mechanisms to be easily accessible and support the control of infection.	

<b>ADB</b>	<b>Schedule of Components by Room</b>	<b>T0504-PCCI</b>
------------	---------------------------------------	-------------------

<b>Project:</b>	PCCI-ALL	PCCI Exemplar Rooms
<b>Department:</b>	PCCI	All PCCI Exemplar Rooms
<b>Room:</b>	T0504-PCCI	Clean Supplies
<b>Room Number:</b>	<b>Revision Date:</b> 21/01/2008	

Quantity			Code	Description	Alt. Code	Grp
New	Trans	Total				
1		1	CAL020	LAMP repeat staff emergency call, wall mounted		1
1		1	DET003	DETECTOR smoke		1
8		8	MSC001	CABINET tall, 600mm facing, (600x400 inserts), with formed plastic liners, open, on plinth, o/a height 2100, HTM71		1
1		1	MSC020	CABINET base, 600mm facing, (600x400 inserts), with formed plastic liners, open, on plinth, o/a height 900m, HTM71		1
1		1	MSW001	WORKTOP, for 1x 600mm facing inserts cabinet, 655W 500D nominal, HTM71		1
1		1	OUT005	SOCKET outlet switched 13amp single, wall mounted		1
2		2	OUT049	CONNECTION UNIT switched 13amp, flex outlet, wall/trunking mounted		1
1		1	STF275	STORAGE UNIT, upper, cupboard, 2 door, 1 shelf, lockable, 550H 600W 300D, HTM63		1
1		1	THE005	THERMOSTAT, wall mounted		1
1		1	REF901	REFRIGERATOR, Drugs, external temperature gauge, monitored, capacity 372 litres, 1835H 595W 640D		2
1		1	SCA901	SCANNER, for Mail Box System, wall mounted		2
1		1	TRO131	TROLLEY, dressing/instrument, stainless steel, buffered, 870H 450W 450D		3
4		4	TRO133	TROLLEY, dressing/instrument, stainless steel, buffered, 870H 750W 450D		3

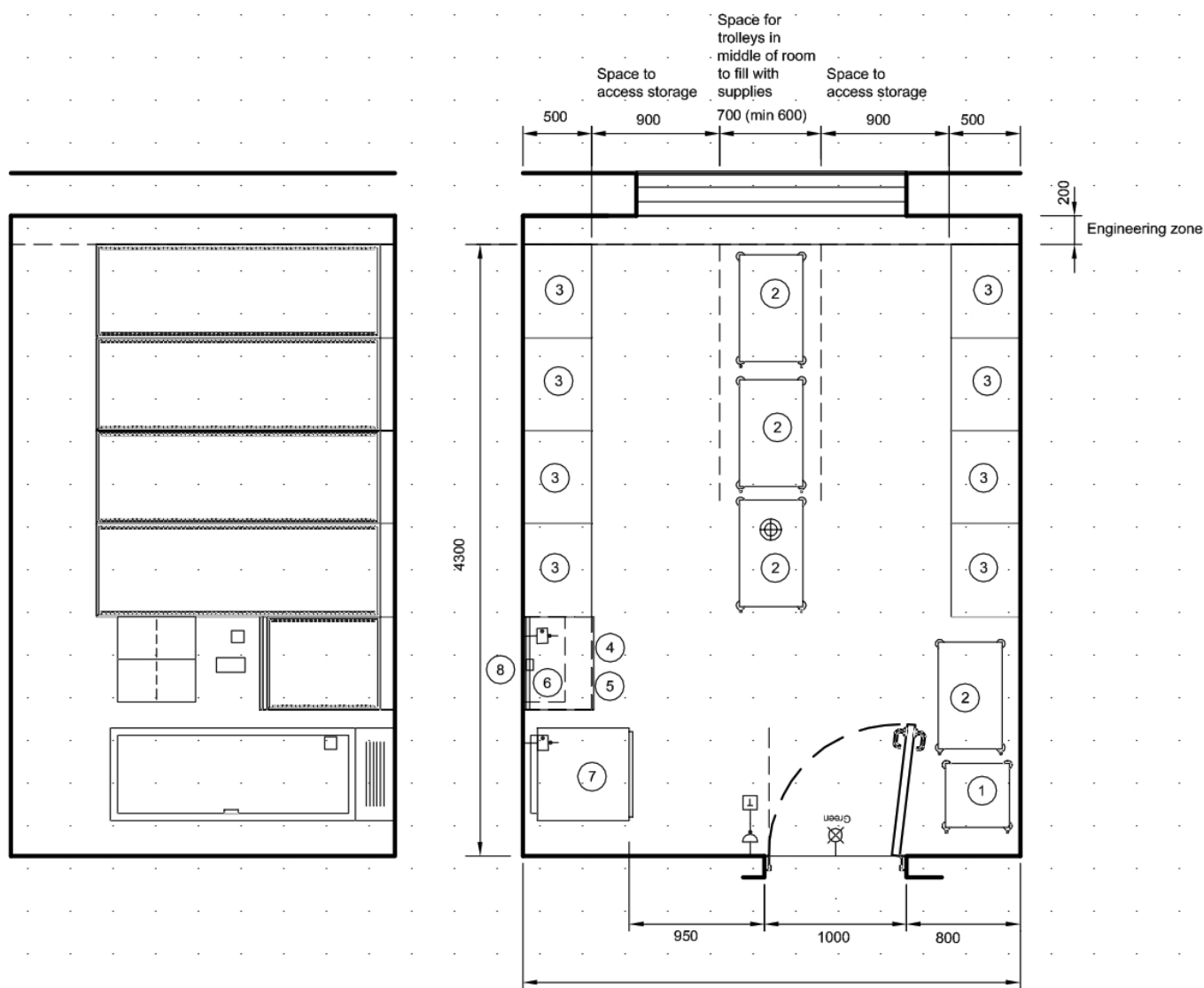
<b>Activity DataBase</b>	<b>21/01/2008</b>
--------------------------	-------------------

## Notes:

1) Storage quantities will depend on size of unit supplied and frequency of deliveries.

## Area Notes:

Extg ADB v20.1 T0504 = 15sqm  
Extg DoH SOA.T0504 = 14sqm  
Drawing = 15 sqm excl ducts & engineering



## Services Key - Not all services will be in room / on drawing

- |                                  |   |   |
|----------------------------------|---|---|
| Single power outlet              | Patient Staff Call                            | NURSE PRESENCE BUTTON linked to external indicator lamp. ILLUMINATED SIGN "PRESENCE/IN USE" |
| Double power outlet              | Push button patient Staff Call                | OUTLET 4 kpa compressed air, medical, trunking mounted                                      |
| Television aerial outlet         | Staff emergency call                          | OUTLET oxygen, medical, trunking mounted  |
| 13 amp connection                | Patient / staff call pull & reassurance light | OUTLET, vacuum, medical trunking  |
| Emergency stop switch            | Reset switch                                  |   |
| Twin Data / Voice outlet         | Light switch dimmer modulating                |   |
| Intercom outlet                  | Nurse presence switch                         |   |
| LAMP repeat staff emergency call | Smoke detector                                |   |
| LAMP repeat patient staff call   | LAMP INDICATING fire alarm                    |   |
| Illuminated sign in use          |   |   |

## Rev / Date:

P6, 13-11-06, Final Issue  
P7, 30-05-07, Reprint Final Issue  
P8, 07-11-07, Issue for HE Discussion  
P9, 21-01-08, Exemplar Issue



Activity Data  
© Crown copyright 2006.  
Published by Department of Health

	<b>T0504-PCCI</b>			
	<b>Clean Supplies</b>			
	<b>Description</b>	<b>Qty</b>	<b>ADB Code</b>	
<b>Furniture etc</b>				
1	TROLLEY, dressing/instrument, stainless steel, buffered, 870H 450W 450D	1	TRO131	
2	TROLLEY, dressing/instrument, stainless steel, buffered, 870H 750W 450D	4	TRO133	
<b>Fixtures / Fittings and Equipment</b>				
3	CABINET tall, 600mm facing, (600x400 inserts), with formed plastic liners, open, on plinth, o/a height 2100, HTM71	8	MSC001	
4	CABINET base, 600mm facing, (600x400 inserts), with formed plastic liners, open, on plinth, o/a height 900mm, HTM71	1	MSC020	
5	WORKTOP, for 1x 600mm facing inserts cabinet, 655W 500D nominal, HTM71	1	MSW001	
6	STORAGE UNIT, upper, cupboard, 2 door, 1 shelf, lockable, 550H 600W 300D, HTM63	1	STF275	Optional
7	REFRIGERATOR, Drugs, external temperature gauge, monitored, capacity 372 litres, 1835H 595W 640D	1	REF901	Optional
8	SCANNER, for Mail Box System, wall mounted	1	SCA901	
<b>Service Provision - See Key</b>				
	LAMP repeat staff emergency call, wall mounted	1	CAL020	
	DETECTOR smoke	1	DET003	
	SOCKET outlet switched 13amp single, wall mounted	1	OUT005	
	CONNECTION UNIT switched 13amp, flex outlet, wall/trunking mounted	2	OUT049	
	THERMOSTAT, wall mounted	1	THE005	

Notes:

## Rev / Date:

P6, 13-11-06, Final Issue  
P7, 30-05-07, Reprint Final Issue  
P8, 07-11-07, Issue for HE Discussion  
P9, 21-01-08, Exemplar Issue



Activity Data  
© Crown copyright 2006.  
Published by Department of Health